


 indicates key staff member



PUERTO RICO DEPT. OF EDUCATION
Alejandro Olmedo, Director
Infrastructure & Recovery Office

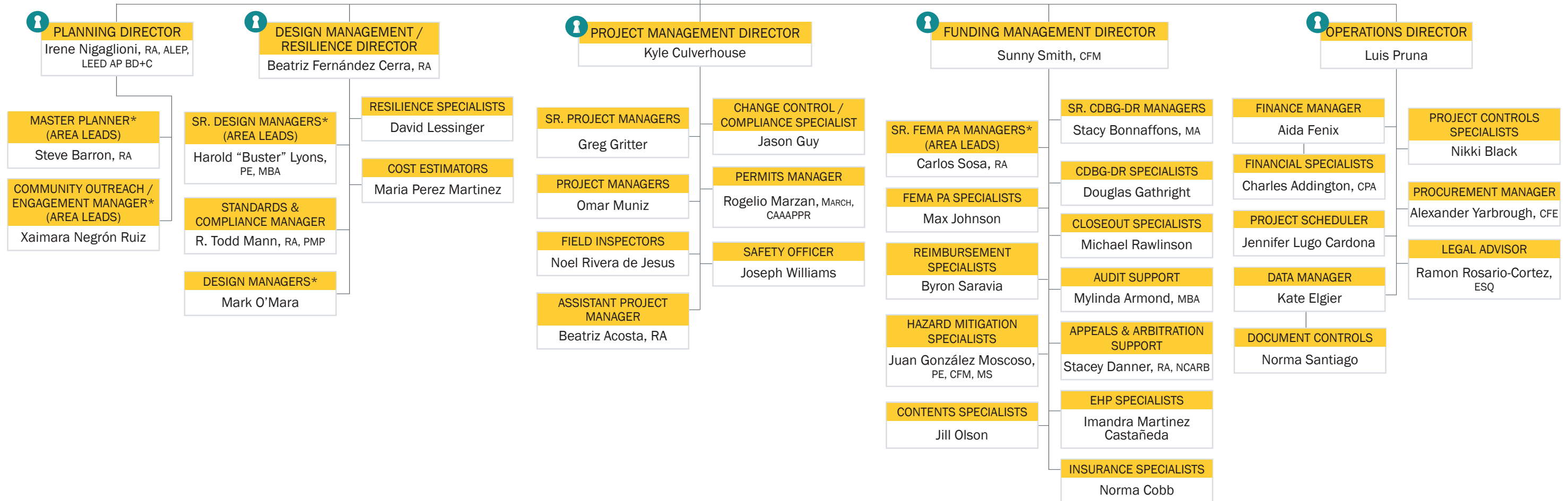
 **PROGRAM EXECUTIVE**
Christopher Pellegrin, AIA

 **PMO PROGRAM DIRECTOR**
Walter Aertker

 **ADVISOR / SME**
Kipp Nelson, JD, MBA

ADMINISTRATIVE
Patricia Sanz

Below is PRDM's proposed organizational structure that includes proposed carefully selected team members' key staff who will lead each program task. Our team offers the added benefit of back-up personnel, including professional engineers, architects, landscape architects, project and construction managers, among other disciplines available should the need arise for staff augmentation. Our team's collective wealth of multi-disciplined disaster recovery experts provides PRDE the added benefit of program and project scalability. Knowing back-up personnel are available to step in should the need for additional resources arise will offer PRDE peace of mind that PRDM's team is always ready when the unexpected occurs.



*Note: For each of the 7 Regions: Arecibo, Bayamón, Caguas, Humacao, Mayaguez, Ponce, and San Juan