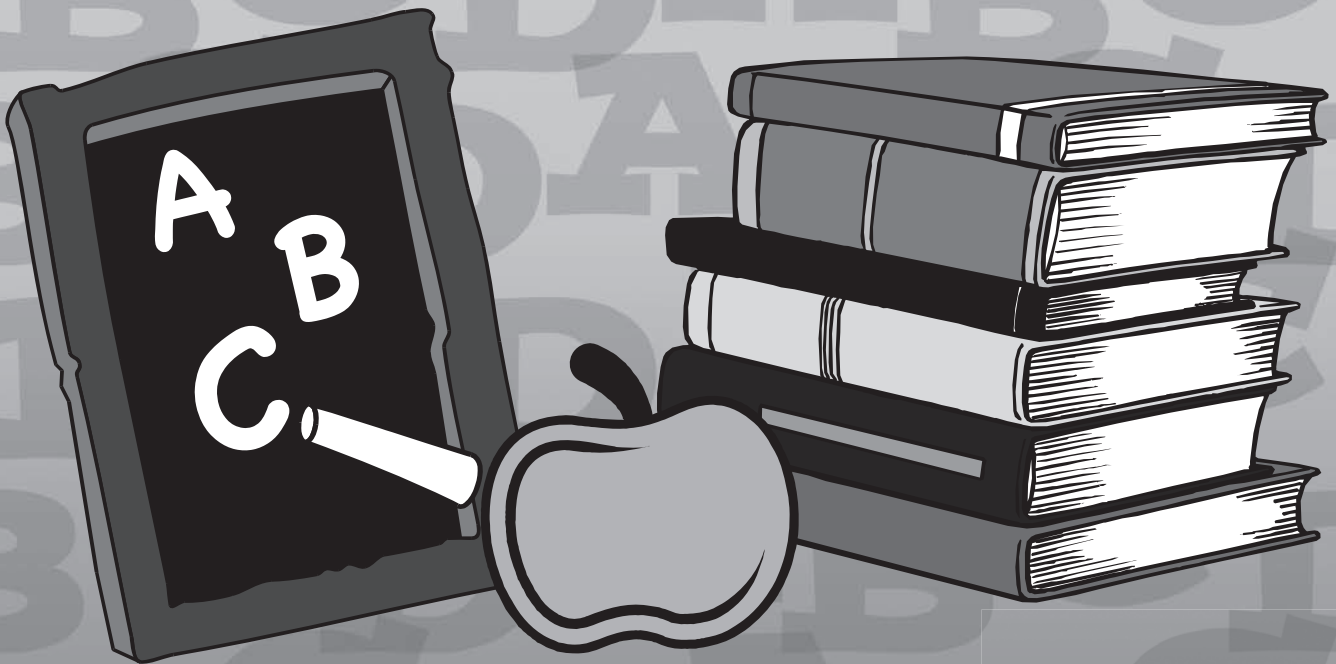




PRACTICE EXERCISES

META-PR 2017



English

Grade
3

Student Name: _____

Esta página se dejó en blanco intencionalmente.

Instrucciones

Antes de empezar los ejercicios, tu maestro o maestra te ayudará a contestar unos ejemplos. Los ejemplos son para que entiendas lo que tienes que hacer una vez comiences los ejercicios. También te indicará cómo ennegrecer los círculos de la hoja de contestaciones para que tu contestación sea válida. Sigue todas las sugerencias y lee con mucha atención.

A continuación verás un ejemplo de la hoja de contestaciones y lo que debes hacer para contestar.

Instrucciones para ennegrecer las respuestas de preguntas de selección múltiple

- Usa lápiz núm. 2 solamente.
- No uses lápiz mecánico, tinta ni bolígrafo.
- Llena el círculo por completo.
- Borra por completo cualquier respuesta que desees cambiar.
- No hagas marcas o líneas en esta hoja.

Incorrecto

Incorrecto

Correcto

Instrucciones para contestar las preguntas de respuesta extendida

- Usa lápiz solamente.
- No uses lápiz mecánico, tinta ni bolígrafo.
- Asegúrate de contestar todas las partes de la pregunta.
- Escribe solamente dentro del recuadro.



English

Samples

These are the Practice Questions of the META-PR for Grade 3. With these questions, you will show how well you can understand and use English.

The practice questions include the following sections: Listening, Reading, and Writing/Language. For each question, mark the letter of the correct answer on your answer sheet.

Now look at Sample A.

A Yesterday, I went with my mother to the park. The flowers in the park were very pretty. We walked around for over an hour.

Which sentence is an **OPINION**?

A “Yesterday, I went with my mother to the park.”

***B** “The flowers in the park were very pretty.”

C “We walked around for over an hour.”

The correct answer is **B**, **The flowers in the park were very pretty**. On your answer sheet, you can see that the circle for **B** is filled in.

Now do the next sample on your own. Read the question and choose the correct answer. Then, mark the letter of the correct answer on your answer sheet.

B Choose the word that belongs in the blank.

The _____ is cold.

A milk

B mil

C mick

The correct answer is **A**, **milk**. The circle for **A** should be filled in on your answer sheet.



Directions: With these practice questions, you will show how well you can understand spoken English. Listen carefully. Then, mark the letter of the correct answer on your answer sheet.

1 Mark the letter of the correct answer on your answer sheet.

2 Mark the letter of the correct answer on your answer sheet.

3 What question does the conversation answer?

- A What do stars look like?
- B Why are there stars?
- C How many stars are in the sky?

4 What is the conversation **MAINLY** about?

- A making wishes on stars
- B counting the stars in the sky
- C sharing information about stars

5 Which sentence answers the question correctly?

- A Simon will walk the dog.
- B Walk the dog tomorrow night.
- C The dog is playing outside.



GO ON TO THE NEXT PAGE AND CONTINUE WORKING.



Go on to the next page

Directions: With these practice questions, you will show how well you can read and understand written English. For each question, mark the letter of the correct answer on your answer sheet.

Black Bears in North America



- 1 Black bears live in many different parts of North America. They are the most common type of bear. Did you know that black bears come in many different colors? Some are brown or even blond!
- 2 During the long, cold winter, black bears go into a deep sleep. They sleep all day and night. These animals make their home, or den, in brush, caves, and even inside hollow trees! If a bear is disturbed in its den, it will often move to another den.
- 3 Black bears eat meat, grass, berries, and bugs. Sometimes they will go near houses to look for food. If you are near a place where bears live, it is important to pick up any food or trash outside. Black bears are fun to learn about and observe, but it is important to keep a safe distance if you see one.

6 The main purpose of paragraph 2 is to tell the reader about —

- A what black bears eat.
- B how black bears look.
- C where black bears live.

7 Why do black bears MOST LIKELY go into a deep sleep?

- A It is winter, and the weather gets cold and snowy in North America.
- B They sleep in dens or caves, where they are safe from the cold winter weather.
- C During the winter season, it is hard to find food, so they sleep and wake up when it is spring.

8 What can the reader learn from this reading selection?

- A Black bears are interesting but dangerous animals that may be found in North America.
- B All bears are different colors, are dangerous, and sleep during the winter months.
- C Black bears are an unusual type of bear that live in North America and sleep during winter.

9 What prefix can be added to the word common to change its meaning to “not often found or seen”?

- A re-
- B un-
- C dis-

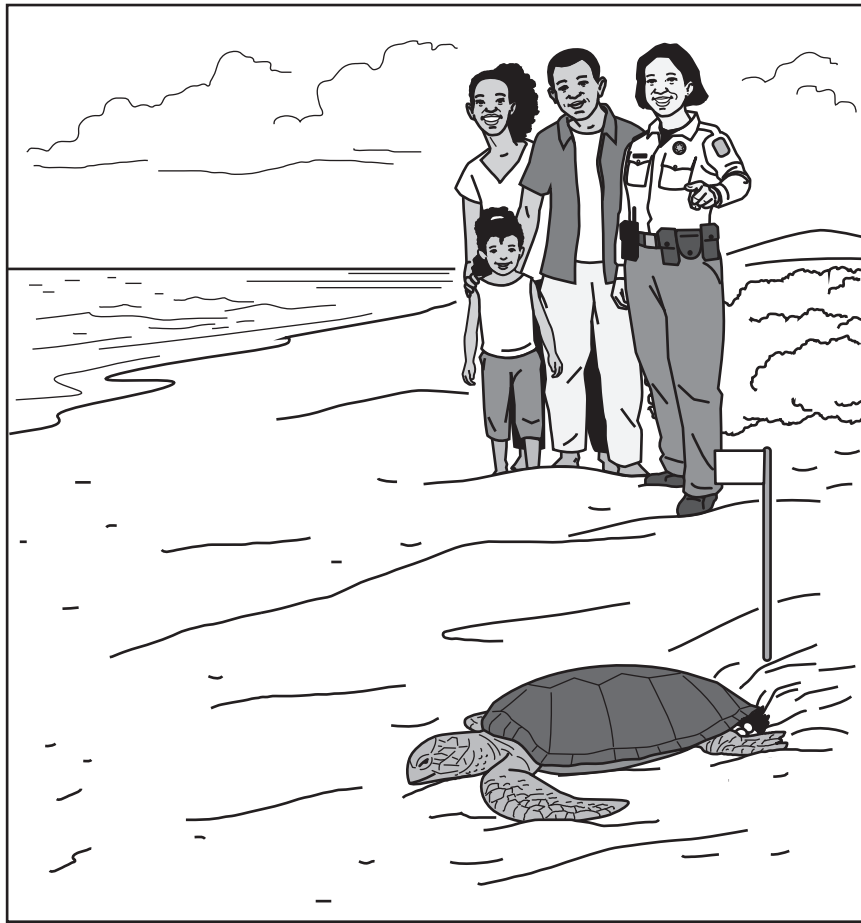
10 A. What is the MAIN winter activity of black bears?

B. Based on the reading selection, what may change the MAIN winter activity of black bears?

Remember to answer all parts of the question in the space provided.



What is a Game Warden?



- 1 Some people spend their days working to protect plants and animals. These men and women are called game wardens, or wildlife officers. They help to make sure that everyone obeys the laws to keep plants and animals safe. They also teach people how to be safe when they are hunting and fishing.
- 2 Every day is different for a game warden. One day a game warden might make sure people are not touching sea turtle nests at the beach. The next day he or she might give out tickets to people who did not pick up their trash. If you like animals, nature, and being outdoors, a job as a game warden might be for you!

11 What does the word game mean in the reading selection?

- A something to play
- B different activities
- C different kinds of animals

12 In what part of a textbook could the reader find the meaning of the word “outdoors,” which is mentioned in paragraph 2?

- A in the index
- B in the glossary
- C in the story title

13 Read the sentence from paragraph 2.

“If you like animals, nature, and being outdoors, a job as a game warden might be for you!”

What is the correct way to divide the word “outdoors” into syllables?

- A ou / tdoors
- B out / doors
- C outd / oors

14 Which word has the same ending sound as the word “beach” from the reading selection?

- A shirt
- B dash
- C teach

15 Which sentence includes a **FACT**?

- A A game warden has the best job.
- B Game wardens keep animals safe.
- C All game wardens like to write tickets.



Directions: Read “Black Bears in North America” and “What is a Game Warden?” again. Then answer questions 16 and 17 about both reading selections.

Black Bears in North America



- 1 Black bears live in many different parts of North America. They are the most common type of bear. Did you know that black bears come in many different colors? Some are brown or even blond!
- 2 During the long, cold winter, black bears go into a deep sleep. They sleep all day and night. These animals make their home, or den, in brush, caves, and even inside hollow trees! If a bear is disturbed in its den, it will often move to another den.
- 3 Black bears eat meat, grass, berries, and bugs. Sometimes they will go near houses to look for food. If you are near a place where bears live, it is important to pick up any food or trash outside. Black bears are fun to learn about and observe, but it is important to keep a safe distance if you see one.

What is a Game Warden?



- 1 Some people spend their days working to protect plants and animals. These men and women are called game wardens, or wildlife officers. They help to make sure that everyone obeys the laws to keep plants and animals safe. They also teach people how to be safe when they are hunting and fishing.
- 2 Every day is different for a game warden. One day a game warden might make sure people are not touching sea turtle nests at the beach. The next day he or she might give out tickets to people who did not pick up their trash. If you like animals, nature, and being outdoors, a job as a game warden might be for you!

16 Based on “Black Bears in North America” and “What is a Game Warden?,” what is an important task that people should do to be helpful?

- A pick up their trash
- B learn how to touch animals safely
- C feed the animals when they are hungry

17 Where does most of the information in BOTH “Black Bears in North America” and “What is a Game Warden?” take place?

- A in the mountains
- B out in nature
- C at the beach

GO ON TO THE NEXT PAGE AND CONTINUE WORKING.



Go on to the next page

Directions: With these practice questions, you will show how well you understand how to write in English. For each question, mark the letter of the correct answer on your answer sheet.

18 Choose the word that belongs in the blank.

We _____ going to the museum.

- A are
- B am
- C is

19 Choose the phrase that belongs in the blank.

The baseball player watched the ball. Suddenly, it flew across the baseball field. He caught it _____.

- A in the night
- B just in time
- C later that day

Read the following selection and answer questions 20 and 21.

My Favorite Place

(1) What is my favorite place? (2) This place is where I want to spend a lot of time. (3) This place is exciting. (4) At this place, I can pretend to be a ship captain who sails around the world. (5) I can pretend to travel in space, too. (6) What is this wonderful place? (7) It is the library.

(8) When I visit the library, I look for adventure books. (9) Then I quickly find a comfortable chair and sit down to read. (10) Sometimes my brothers go with me to the library. (11) Them are little and like to read picture books. (12) When we get home, I read parts of my newest adventure book to my family.

20 In sentence 9, which word is an **ADJECTIVE**?

- A comfortable
- B chair
- C read

21 What word should go in sentence 11 instead of Them?

- A Him
- B We
- C They



- 22** Choose the word that belongs in the blank.

My mom uses a _____ to mop the floor.

- A bucket
- B buket
- C bucket

- 23** Choose the word that belongs in the blank.

The concert was ready to begin. Smiling, Lisa picked up her guitar and prepared to play her song. She was nervous and _____.

- A excited
- B sleepy
- C confused

- 24** Which word could replace the blank to list these words in alphabetical order?

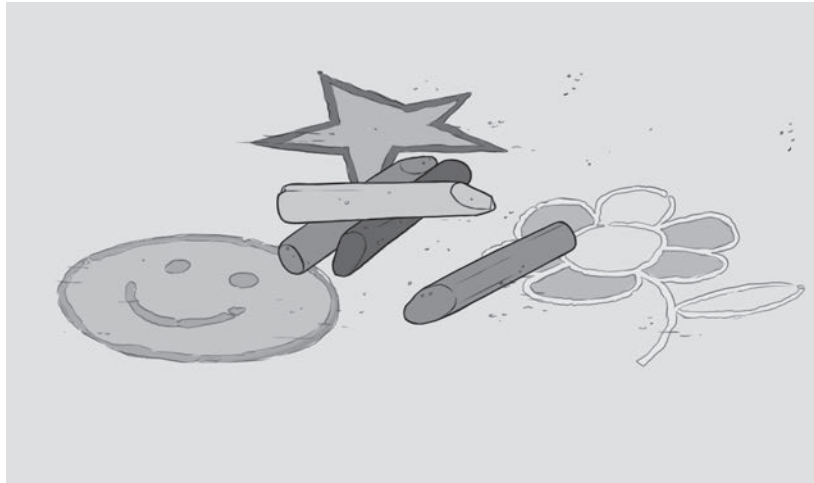
mirror, mountain, _____

- A message
- B machine
- C multiply



Read the following selection and answer questions 25 and 26.

Sidewalk Chalk



(1) Have you used sidewalk chalk? (2) Some artists use it, too. (3) Every year, chalk artists meet in a town in Italy. (4) They draw on the sidewalks, and the best chalk drawing wins a prize!

- 25** Elisa wants to write about sidewalk art. She made this list of things to do.

1. Get a notebook and a pencil.
2. Go to the library.
3. _____

Choose the step that belongs in her list.

- A Ask for help at the front desk.
- B Read the message board.
- C Look at storybooks.

- 26** Read this sentence.

Children use sidewalk chalk to draw pictures.

This sentence should be added **AFTER** —

- A sentence 1.
- B sentence 2.
- C sentence 3.

27 Read the paragraph.

(1) Today, I am helping my dad paint my room. (2) He has the _____ and the paint. (3) I have the paintbrushes.

Which word **BEST** completes sentence 2?

- A book
- B chair
- C ladder

28 Choose the word that belongs in the blank.

I cleaned the glass very well. Then I put _____ on the table with a plate. My brother put flowers on the table.

- A it
- B he
- C him

29 Choose the sentence that is correct.

- A Is nice Mario's grandmother.
- B Mario's nice grandmother is.
- C Mario's grandmother is nice.



